

## **9 Selena Avenue Lismore Heights,**

### **Table of Contents**

- | [Property Details](#)
- | [Photo Gallery](#)
- | [Map](#)
- | [Contact For Inspection](#)



## Property Details

**9 Selena Avenue, Lismore Heights**



**SOLD BY THE WAL MURRAY TEAM**

3  2  2 



Perfectly positioned in a prime Lismore Heights location, this grand home offers space, comfort and captures stunning views to the hills. Elevated bringing in the cool breezes and natural light, it's the ideal blend of classic charm and modern convenience.

Step inside to a spacious formal lounge with air-conditioning, flowing through to the open plan meals area and a beautifully appointed kitchen. Walk-in pantry, dishwasher and quality appliances, the kitchen will be a joy for the family cook.

To the front of the home is an enclosed front sunroom providing an ideal spot to unwind or enjoy your morning coffee.

The home features three generous bedrooms, all with built-in robes - the main bedroom includes a walk-in robe and private ensuite. A separate study nook and a stunning modern bathroom with both shower and bath completes the upper level.

Outside, enjoy a level and fully fenced backyard ideal for kids and pets. The yard captures expansive views to the hills, plus there's a covered patio area for outdoor dining and BBQs.

Underneath the home with internal access, is a double lock-up garage plus exceptional storage space for garden tools, camping equipment and much more.

Such a premier location, this home should not be missed.

- 3 Bedrooms
- 2 Bathrooms
- 2 Garages
- 1 Ensuite
- Air Conditioning
- Remote Garage
- Balcony
- Fully Fenced
- Built In Robes
- Dishwasher

---

**\$839,000**



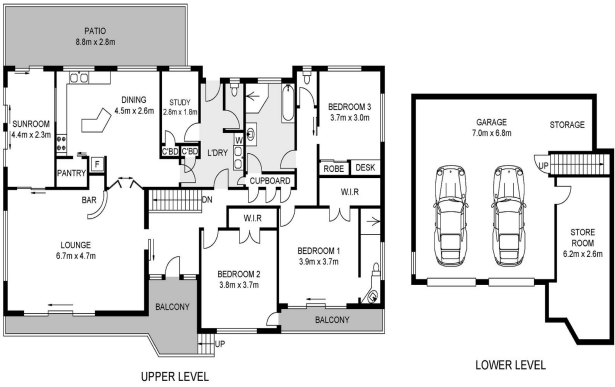
## Photo Gallery







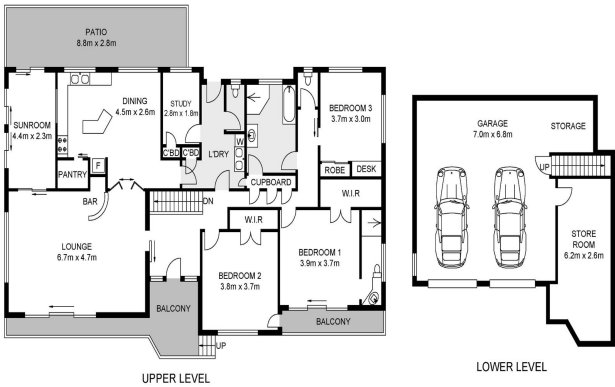




Dimensions are approximate. All information contained herein gathered from sources we believe to be reliable. However we cannot guarantee its accuracy and interested persons should rely on their own enquiries. Single intended use purposes only, not to be duplicated © 2023 www.visionmedia.vision - 0411 444 223

INT : 165.7m<sup>2</sup>  
EXT : 35.9m<sup>2</sup>  
GARAGE : 67.3m<sup>2</sup>

**9 Selenia Avenue, Lismore Heights**



Dimensions are approximate. All information contained herein gathered from sources we believe to be reliable. However we cannot guarantee its accuracy and interested persons should rely on their own enquiries. Single intended use purposes only, not to be duplicated © 2023 www.visionmedia.vision - 0411 444 223

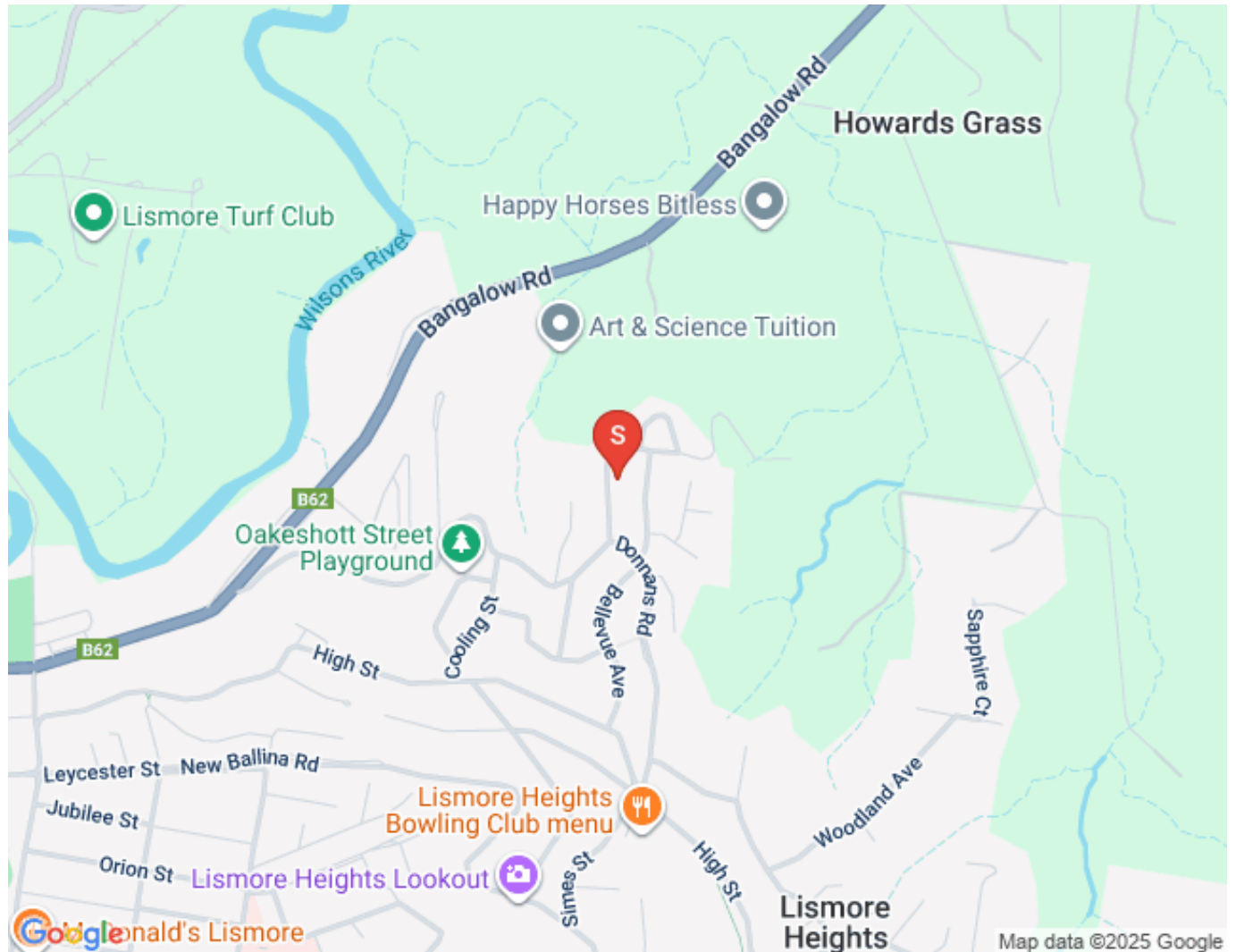
INT : 165.7m<sup>2</sup>  
EXT : 35.9m<sup>2</sup>  
GARAGE : 67.3m<sup>2</sup>

**9 Selenia Avenue, Lismore Heights**





## Map





## Contact For Inspection



**BENJAMIN CONTE**

LICENSED REAL ESTATE AGENT

0408 368 913

[ben@walmurray.com.au](mailto:ben@walmurray.com.au)